

FIG-1 11/25/92

- LEGEND:**
- — — — — PROPERTY LINE
  - X-X- FENCE
  - ST- STORM SEWER
  - — — — — SOUTH AREA SOURCE CONTROL PROJECT BOUNDARY
  - — — — — OPERABLE UNIT No.4 BOUNDARY (DASHED WHERE APPROXIMATE)
  - RI-2 GROUNDWATER MONITORING WELL
  - ⊕ DB-64 DEEP SOIL BORING
  - A A' LINE OF CROSS-SECTION

FIGURE 6-1  
 LOCATION OF GEOLOGICAL CROSS-SECTIONS  
 DES MOINES SOUTH AREA SOURCE CONTROL PROJECT  
 DES MOINES, IOWA  
**ECKENFELDER INC.** Nashville, Tennessee  
 Mahwah, New Jersey  
 Rochester, New York

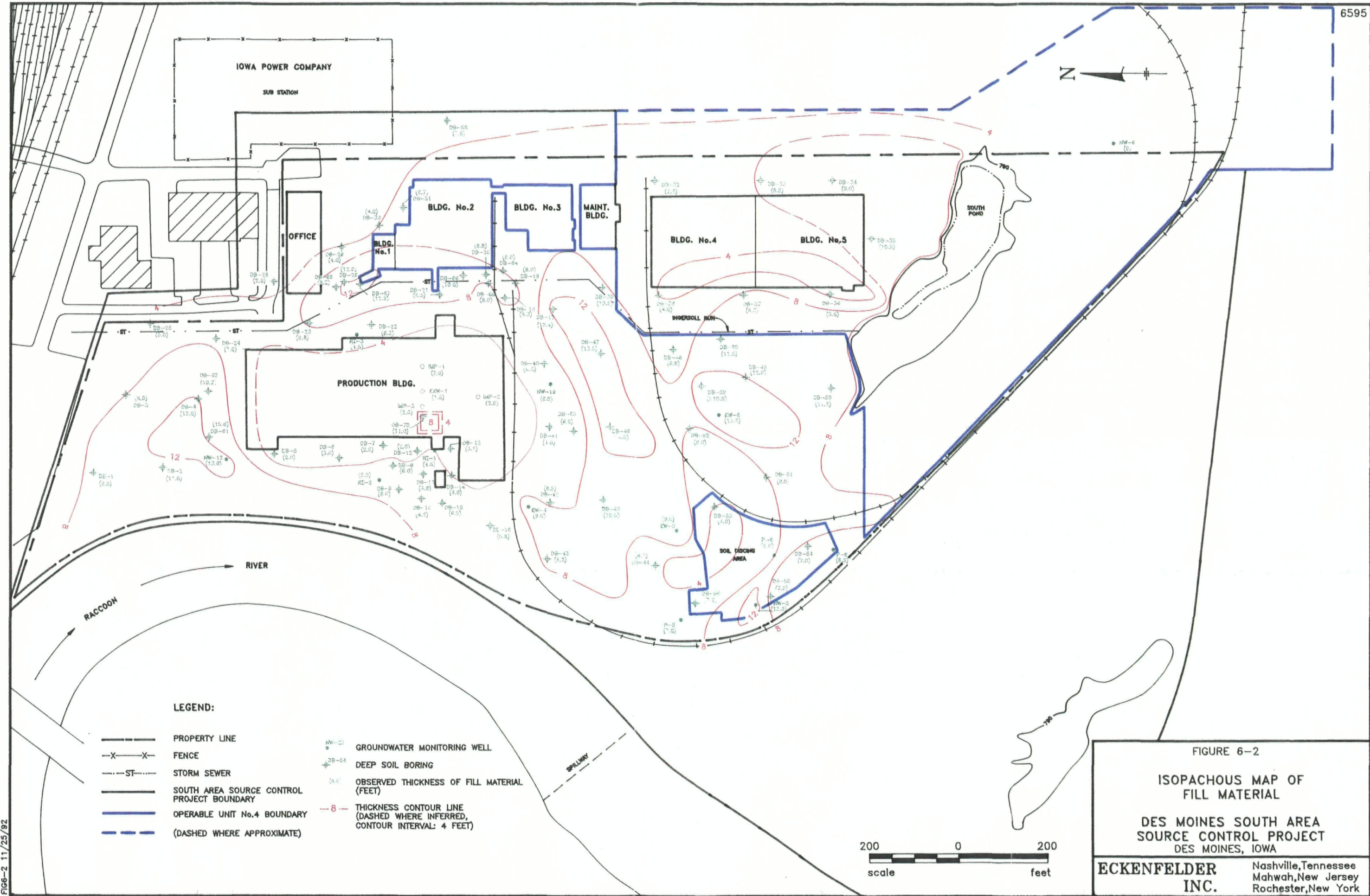


FIG-2 11/25/92